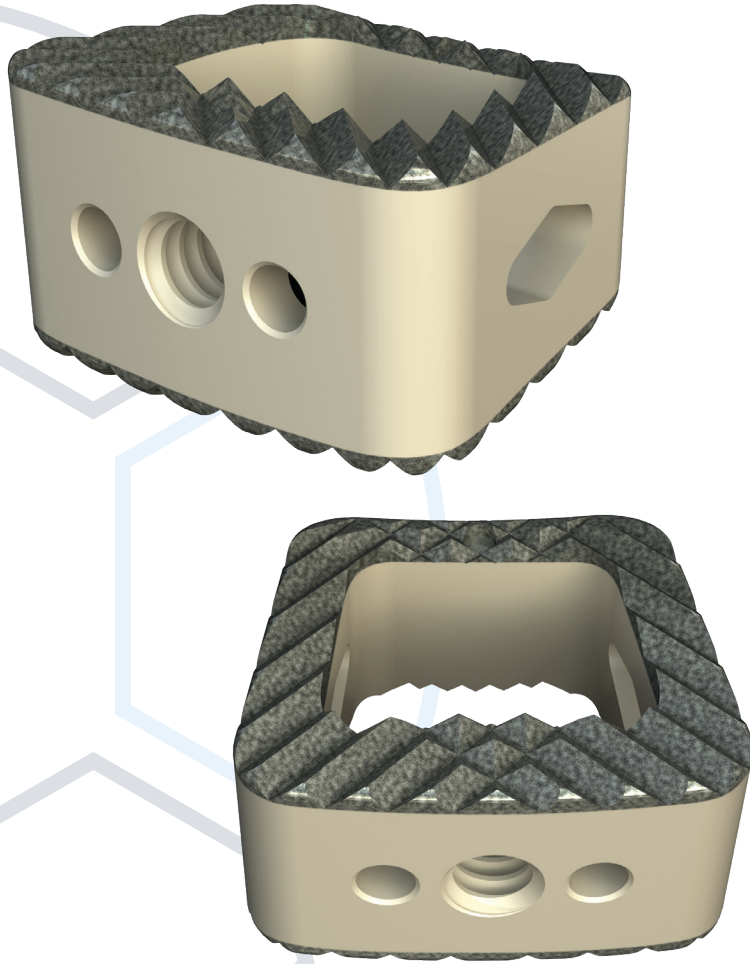


SAGE[®] PEEK

CERVICAL INTERBODY FUSION SYSTEM
Featuring Titanium Plasma Coating

Features & Benefits

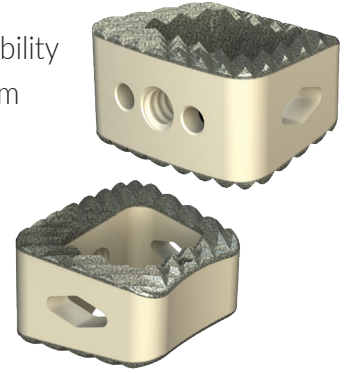


CURITEVA[®]

SAGE® PEEK CERVICAL INTERBODY FUSION SYSTEM

Featuring Titanium Plasma Coating

Sage® Titanium Plasma Coated Interbody system is designed to offer immediate stability with a friction fit design. The interbody is manufactured out of PEEK with a titanium plasma spray coating. The interbody is offered in four footprints to accommodate individual patient anatomy while the streamlined instrumentation is designed to aid in consistent and accurate implant placement. The titanium plasma coating will add approximately 0.25mm thickness to the overall height of the interbody.



System Features:

- Surface topography produces superior implant contact and construct stability
- Optimal Radiolucency
- Long-Term Fixation
- Modulus of elasticity between cortical and cancellous bone for optimal load sharing
- Designed to ensure a high degree of compressive strength and dimensional stability
- Tantalum radiopaque markers to optimize visibility and placement
- Multi-directional, aggressive teeth designed to prevent implant migration
- Robust inserter engagement features to facilitate implant insertion
- Large, central graft cavity for packing bone graft to facilitate fusion
- Lateral windows provide vascularization to the fusion site
- Self-distracting leading edge to facilitate implant insertion
- Color-coded instruments for easy identification

Titanium Plasma Coated PEEK Cervical Interbodies

Catalog Number	Description (W x D x H)	Graft Volume	Catalog Number	Description (W x D x H)	Graft Volume
C224-121105-7CT	12 x 11 x 5mm	.16cc	C224-161305-7CT	16 x 13 x 5mm	.34cc
C224-121106-7CT	12 x 11 x 6mm	.20cc	C224-161306-7CT	16 x 13 x 6mm	.42cc
C224-121107-7CT	12 x 11 x 7mm	.24cc	C224-161307-7CT	16 x 13 x 7mm	.50cc
C224-121108-7CT	12 x 11 x 8mm	.28cc	C224-161308-7CT	16 x 13 x 8mm	.58cc
C224-121109-7CT	12 x 11 x 9mm	.32cc	C224-161309-7CT	16 x 13 x 9mm	.66cc
C224-121110-7CT	12 x 11 x 10mm	.36cc	C224-161310-7CT	16 x 13 x 10mm	.74cc
C224-121111-7CT	12 x 11 x 11mm	.39cc	C224-161311-7CT	16 x 13 x 11mm	.82cc
C224-121112-7CT	12 x 11 x 12mm	.43cc	C224-161312-7CT	16 x 13 x 12mm	.91cc
C224-141205-7CT	14 x 12 x 5mm	.25cc	C224-181405-7CT	18 x 14 x 5mm	.44cc
C224-141206-7CT	14 x 12 x 6mm	.31cc	C224-181406-7CT	18 x 14 x 6mm	.55cc
C224-141207-7CT	14 x 12 x 7mm	.37cc	C224-181407-7CT	18 x 14 x 7mm	.66cc
C224-141208-7CT	14 x 12 x 8mm	.43cc	C224-181408-7CT	18 x 14 x 8mm	.77cc
C224-141209-7CT	14 x 12 x 9mm	.49cc	C224-181409-7CT	18 x 14 x 9mm	.88cc
C224-141210-7CT	14 x 12 x 10mm	.55cc	C224-181410-7CT	18 x 14 x 10mm	.99cc
C224-141211-7CT	14 x 12 x 11mm	.61cc	C224-181411-7CT	18 x 14 x 11mm	1.10cc
C224-141212-7CT	14 x 12 x 12mm	.67cc	C224-181412-7CT	18 x 14 x 12mm	1.21cc



For more information or to place an order call: 877.9CURITEVA, email: customersupport@curiteva.com or visit www.curiteva.com

Products patented and/or patent pending.
All products are not currently available in all markets.

Copyright©2021 by Curiteva, Inc.
QMSF-1128 Rev 3.0